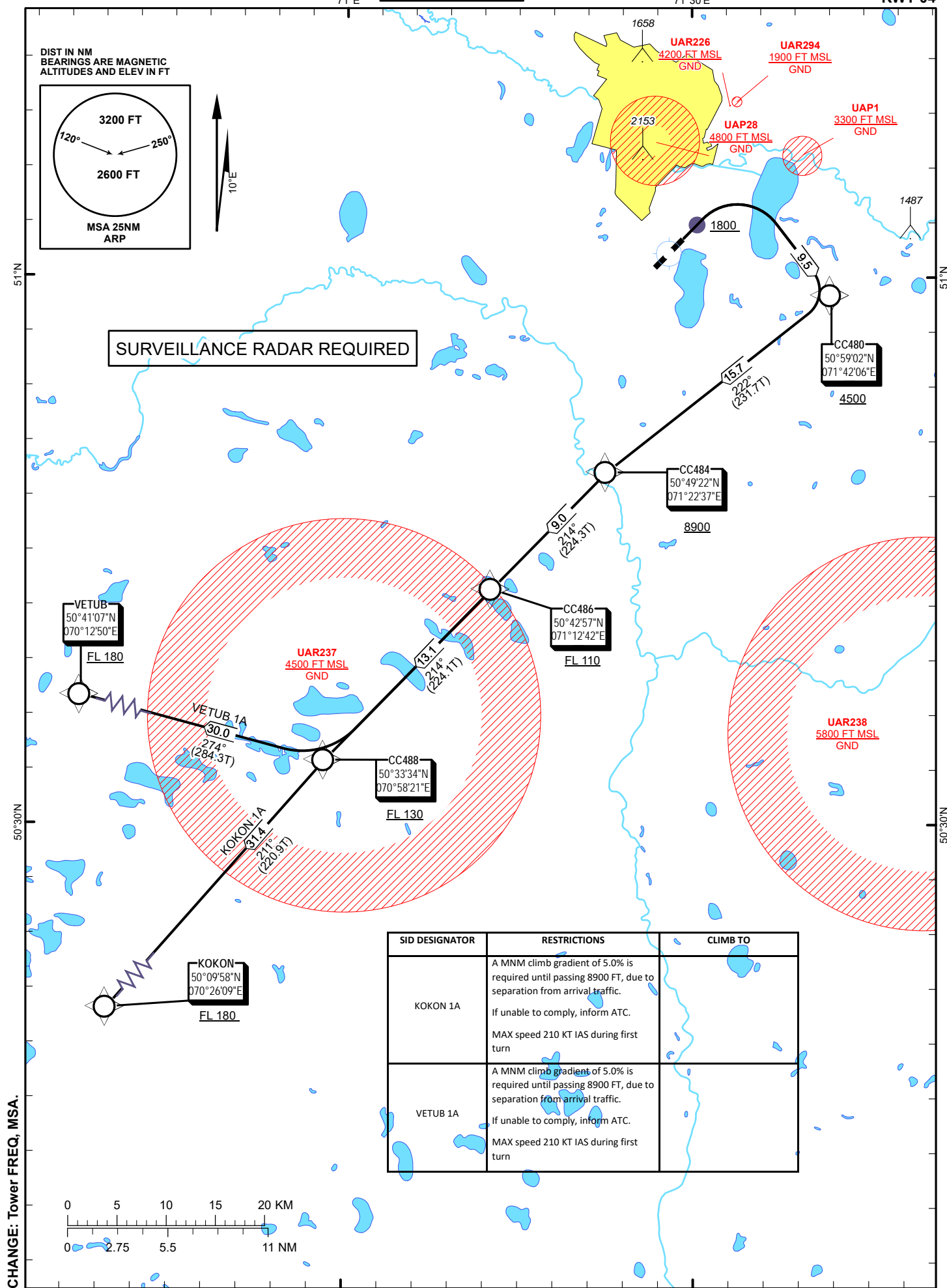


TRANSITION ALTITUDE
10000 ft

ASTANA TOWER 135.5
ASTANA APPROACH 124.6
ASTANA RADAR 120.7
ASTANA ATIS(EN) 129.5
ASTANA ATIS(RU) 128.3

KOKON 1A, VETUB 1A
(RNAV 1 SID BASED ON GNSS)

ASTANA
NURSULTAN NAZARBAYEV
INTERNATIONAL AIRPORT
RWY 04



TABULAR DESCRIPTION

KOKON 1A RWY04											
Serial Number	Path Descriptor	Waypoint Identifier	Fly - over	Course °M(°T)	Magnetic Variation(°)	Distance NM	Turn Direction	Altitude FT	Speed KT	VPA (°)	Navigation Specification
10	CA	-	-	35(44.6)	10	2.1	-	+1800	-210	2.9	RNAV1
20	DF	CC480	-		10	9.5	R	+4500		2.9	RNAV1
30	TF	CC484	-	222(231.7)	10	15.7	R	+8900		2.9	RNAV1
40	TF	CC486	-	214(224.3)	10	9	L	+FL110	-250	1.9	RNAV1
50	TF	CC488	-	214(224.1)	10	13.1	-	+FL130		1.9	RNAV1
60	TF	KOKON	-	211(220.9)	10	31.4	-	+FL180		1.9	RNAV1

WAYPOINT LIST

KOKON 1A		
Waypoint Identifier	Coordinates	
DER	510210.90N	0712915.64E
CC480	505902.26N	0714206.01E
CC484	504922.01N	0712237.39E
CC486	504256.68N	0711242.08E
CC488	503334.05N	0705821.32E
KOKON	500958.00N	0702609.00E

TABULAR DESCRIPTION

VETUB 1A RWY04											
Serial Number	Path Descriptor	Waypoint Identifier	Fly - over	Course °M(°T)	Magnetic Variation(°)	Distance NM	Turn Direction	Altitude FT	Speed KT	VPA (°)	Navigation Specification
10	CA	COORD	-	35(44.6)	10	2.1	-	+1800	-210	2.9	RNAV1
20	DF	CC480	-		10	9.5	R	+4500		2.9	RNAV1
30	TF	CC484	-	222(231.7)	10	15.7	-	+8900		2.9	RNAV1
40	TF	CC486	-	214(224.3)	10	9	L	+FL110	-250	1.9	RNAV1
50	TF	CC488	-	214(224.1)	10	13.1	-	+FL130		1.9	RNAV1
60	TF	VETUB	-	274(284.3)	10	30	R	+FL180		1.9	RNAV1

WAYPOINT LIST

VETUB 1A		
Waypoint Identifier	Coordinates	
DER	510210.90N	0712915.64E
CC480	505902.26N	0714206.01E
CC484	504922.01N	0712237.39E
CC486	504256.68N	0711242.08E
CC488	503334.05N	0705821.32E
VETUB	504107.00N	0701250.00E